

FOR SALE

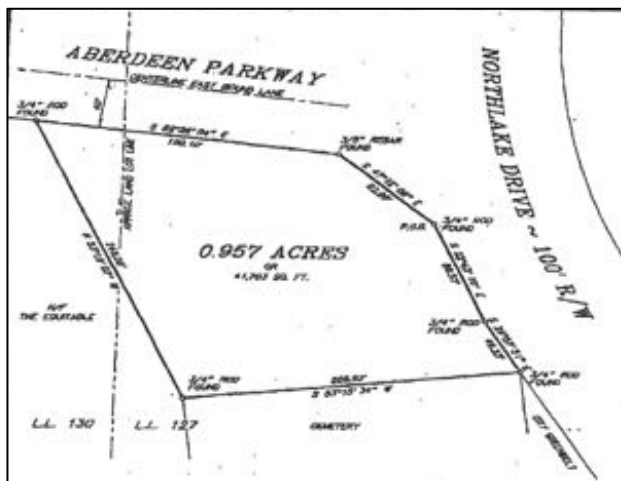
1 +/- ACRE SITE

Corner of Aberdeen Parkway and Northlake Drive, Peachtree City, GA 30269



Property Details:

- Site: 1 +/- Acre
- Zoned GC (General Commercial)
- Gently Sloping Topography
- Double Road Frontage
- Sale Price: \$299,000



1100 Commerce Drive, Suite B
Peachtree City, GA 30269
Office: 770-486-8200
QuantumCRE.com

Paul Schwinne, CCIM

Broker

Cell: 678-296-1588

PSchwinne@QuantumCRE.com

David A. Strickland

Associate Broker

Cell: 770-377-3078

DStrickland@QuantumCRE.com

This information has been secured from sources we deem reliable, but we make no representations or warranties, expressed or implied as to the accuracy of the information.