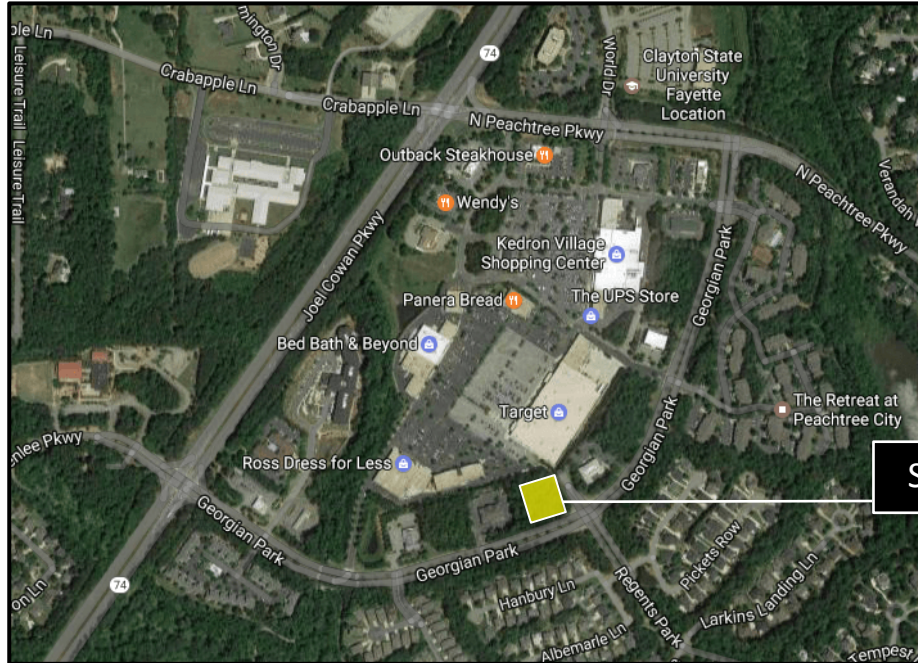


# AVAILABLE

## Professional Office Lot

### Georgian Park, Peachtree City, GA 30269



**SITE**

#### Property Details:

- Develop to Suit
- 1.36 +/- Acres
- All Utilities Available
- Equity Ownership Available
- Professional Corridor
- Zoned for Office
- Golf Cart Accessible
- Available for Purchase at \$415,000



1100 Commerce Drive, Suite B  
Peachtree City, GA 30269  
Office: 770-486-8200  
QuantumCRE.com

**Paul Schwinne, CCIM**

Broker

Cell: 678-296-1588

PSchwinne@QuantumCRE.com

**David A. Strickland**

Associate Broker

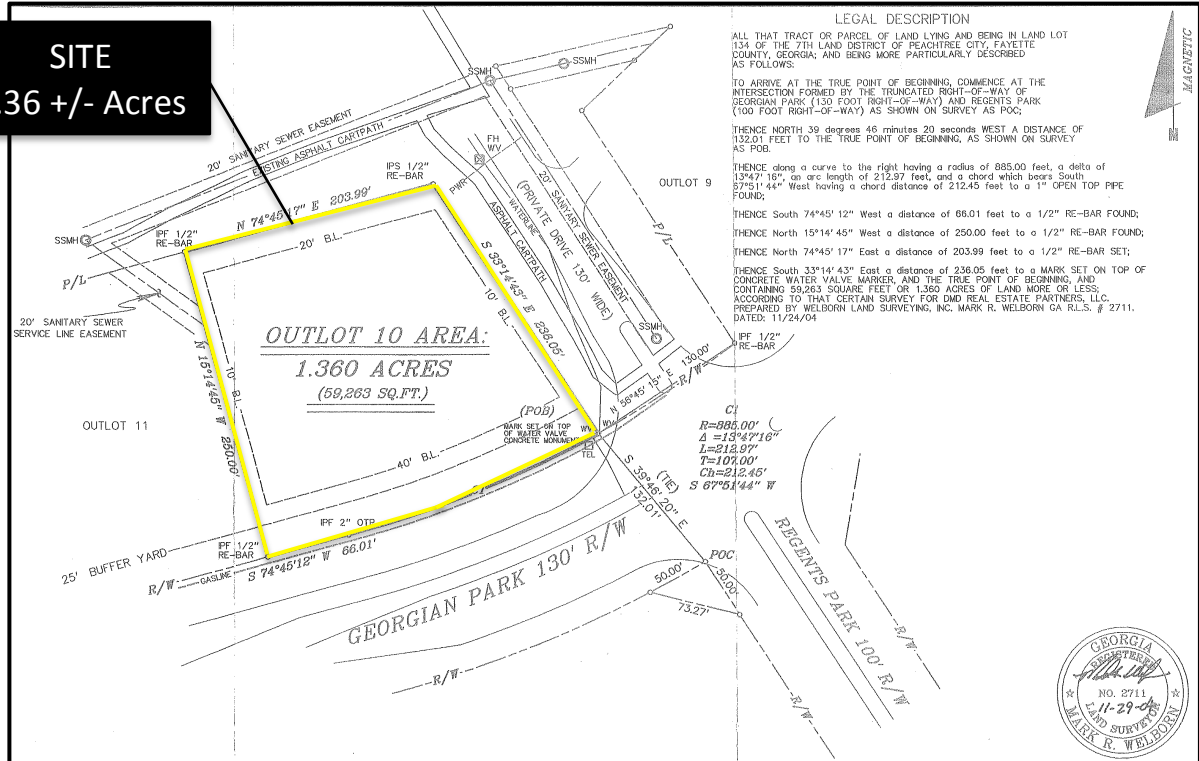
Cell: 770-377-3078

DStrickland@QuantumCRE.com

This information has been secured from sources we deem reliable, but we make no representations or warranties, expressed or implied as to the accuracy of the information.

# Georgian Park, Peachtree City, GA 30269

**SITE**  
1.36 +/- Acres



**Quantum**  
COMMERCIAL REAL ESTATE

Office: 770-486-8200

This information has been secured from sources we deem reliable, but we make no representations or warranties, expressed or implied as to the accuracy of the information.